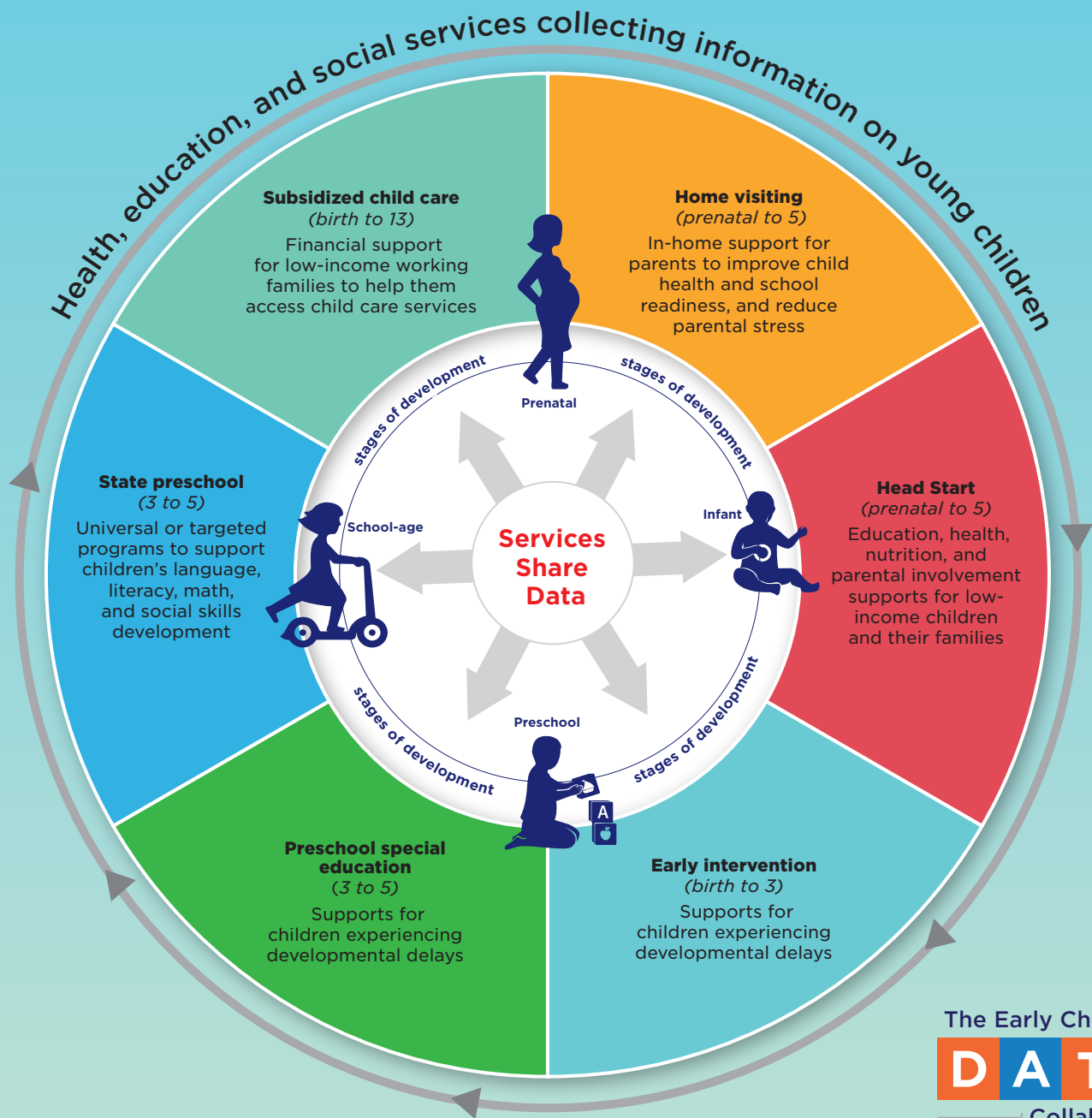


Sharing early childhood information can support children's development.

Many federal, state, and local programs support children's development, as children are touched by different health, education, and social services. When these programs share data they collect, providers can see what other services children receive, and policymakers can judge which interventions—alone or combined—best meet children's needs.



The Early Childhood
DATA
Collaborative

For information on early childhood data sharing in your state, see *2013 State of States' Early Childhood Data Systems* at ecedata.org.